

# FLIPPER

Driven by the exceptional



MODELS

# FLIPPER

Driven by **the exceptional**

## DRIVEN BY THE EXCEPTIONAL

We're driven by the Flipper promise – To deliver exceptional boating that is Fun, Sporty, and Social with focus on Quality, Aesthetics, Safety and Performance.

Driven by over 57 years of Finnish boat building heritage, influenced throughout the decades by R&D and design from home and from our Scandinavian neighbours.

Driven by the racing DNA that echoes throughout every hull that comes off the production line, confident that whoever gets to drive her will experience the same thrilling and assured performance that only a Flipper can deliver.

Driven by our belief that boating should go beyond the conventional and by our never-ending quest to set ourselves apart from everyone else – in performance, style, and drivability.

Driven by outstanding engines and state-of-the-art technology that allow you to experience the full effects of thrilling, versatile and absorbing boating.

**Flipper Boats – Driven by the Exceptional – Driven by You!**



### FLIPPER MODELS 2024:

#### DAY CRUISER

900 DC  
800 DC  
700 DC  
650 DC

#### SPORT TOP

900 ST

It has been almost six decades since Flipper began producing amazing boats, creating unforgettable memories for countless thousands of customers. The world of boating has changed a lot in this time along with the needs and demands of modern boating enthusiasts.



Flipper Boats has always been on the crest of the wave when it comes to delivering desirable, versatile, and nimble boats. This is possible because some things have never changed – Flipper Boat's original principle to focus on quality, performance & drivability, style, and aesthetics – while never being afraid to create our own wake and stand out from the crowd.

## QUALITY AND FUNCTIONALITY

---

Flipper Boats are extremely well built with no expense spared on components, technology, fabrics, and finish. Proudly *'Made in Finland'*, Flipper continues to offer premium functionality along with durability and comfort that allow you to enjoy all aspects of boating on every level.



## PERFORMANCE AND DRIVABILITY

---

All Flipper models feature the unique Flipper Speedhull design with optimized hydrodynamic design, driven by responsive and powerful engines and controlled using modern steering consoles and the latest navigational technology. Boating has never been this fun.

## STYLE AND AESTHETICS

---

Simply beautiful and eye catching, every Flipper model ever designed has been in the creative hands of renowned Scandinavian professionals. We believe you must feel the thrill even before you set foot on the deck or start her engines. This has always been, and always will be the Flipper way.





## FLIPPER 900 DC

MERCURY 2 X F225 XL CW DTS  
MERCURY 2 X V300 XL CW AMS DTS

# SIMPLY CAPTIVATING

Allow yourself to be taken away by the beauty and performance of the Flipper 900 DC.

The striking lines and stunning design of the 900 DC means it grabs your attention the moment you step onto the dock. As you step onboard you take in the elegant details and premium finish of the deck, cockpit, and cabin, perfect for socializing, dining, sunbathing and relaxing.

Then feel the excitement build at what lies ahead...

...all out performance that fuses speed, responsiveness, safety, and versatility into the most electrifying drive out on the water.

Weekend trips along the coast with family and friends, visiting your favorite bay or island, chasing new horizons, exploring new waters, and experiencing the exhilaration of speed and performance that only the Flipper 900 DC can deliver – Where will it take you next?

LENGTH.....	9,05 M
BEAM.....	3,10 M
DRAUGHT.....	0,64 M
WEIGHT.....	3 100 KG + ENGINE
ENGINE OPTIONS.....	2 X 225–300 HP
BERTHS.....	3+2
FUEL CAPACITY.....	445 L
FRESH WATER CAPACITY.....	96 L
CE CATEGORY / PERSONS.....	B / 7 AND C / 11



## TEST REPORT

**BOAT:** FLIPPER 900 DC **ENGINE:** 2 X MERCURY 300XL VERADO **INSTALL HEIGHT:** 4  
**DRIVE AND PROPELLER:** 14,6 X 21" REVOLUTION 4 RH + LH **RATIO:** 1,85:1 **LOAD (PERSONS):** 3

RPM	FUEL L/H	TOTAL KNOTS	FUEL L/NM	RANGE NM*	TRIM*
2500	39,2	12,7	3,09	130	0
3000	46,8	21,5	2,18	184	0
3500	58,1	28,1	2,07	194	16
4000	75,7	33,5	2,26	177	30
4500	96,1	38,9	2,47	162	38
5000	115,3	43,2	2,67	150	47
5400	155,8	47,1	3,31	121	47
6015	193,4	52,5	3,68	109	52

The figures in test reports are approximate. It is possible that the propellers used in the tests are not standard propellers.

## STANDARD EQUIPMENT

12V DC output, 3 pcs  
 Berths in cabin, 3 + 2  
 Bilge pump, electric 2 pcs, manual 1 pc  
 Bow ladders (not with bow anchor winch)  
 Bow thruster  
 Canopy for harbor use  
 Carpet, bow cabin  
 Chart map for plotter  
 Cockpit table, foldable, electrically adjustable, walnut  
 Courtesy lights  
 Cruise Control  
 Cup holders  
 Cushion sets, cabin + cockpit  
 Deck hatch  
 Deck lights, 8 pcs  
 Docking light, bow  
 Double battery system, start + 225 Ah service  
 EcoTeak flooring, bow deck + cockpit  
 Fender baskets  
 Fire extinguisher, 2 pcs  
 Fixed fuel tank, 445 L  
 Flushing toilet, electric + wash basin + faucet  
 Folding sunbed seat, aft

Horn  
 Hydraulic steering, tilt steering wheel  
 Mercury Active Trim  
 Offshore seats, 3 pcs  
 Pantry with diesel stove, faucet + sink  
 Portlight + curtains, 3 pcs, cabin  
 Portlight, openable, secondary sleeping area  
 Portlight, openable, toilet  
 Pressure water system for pantry + toilet, 96 L  
 Radio / Bluetooth, Black Box, loudspeakers (cabin 2 pcs, cockpit 2 pcs)  
 Rails and fittings stainless, acid proof steel  
 Refrigerator, 65 L  
 Simrad Glass Bridge, NSX 12" + sonar sensor + SCC  
 Sunbed cushions, cockpit  
 Trim tabs, Ultraflex  
 USB charging port, dashboard: port + starboard and 3 pcs in cabin  
 Ventilation in the bow cabin  
 VesselView Mobile  
 Water ski pole  
 White hull  
 Windshield wipers, 2 pcs  
 Wireless charging of mobile phones, 1 pc

## OPTIONAL EQUIPMENT

1<sup>st</sup> Mate Marine Safety  
 Air conditioning (requires shore power with inverter)  
 Anchor winch, aft + anchor 12 kg  
 Anchor winch, bow + anchor 10 kg  
 Antifouling  
 Autopilot  
 Bidet shower + drain from WC  
 Canopy  
 DAB-module, incl. antenna  
 Docking lights, 4 pcs, on the sides  
 Extra drawer fridge, 30 L  
 Full Glass Bridge, 2 x Simrad Glass Bridge, NSX 12" + sonar sensor + SCC  
 GPS tracking system  
 Grey water tank  
 Grill, electric, replacing stove

Heater, 4,5 kW, diesel: cabin, cockpit, windshield (factory installation)  
 HIFI audio, Fusion, 4 speakers + subwoofer + amplifier  
 Joystick Piloting  
 Service battery, 2 x 225 Ah  
 Shore power Basic  
 Shore power Maxi + inverter  
 Shower on swim platform  
 Simrad HALO20+ radar (requires Sun-Top roof)  
 Sun-Top roof  
 Tv-prepared (antenna + cables to bow cabin)  
 Underwater lights  
 VHF / AIS, receiver / sender  
 Warm water system, 16 L (requires shore power)  
 Zipwake automatic trim tabs (instead of standard trim tabs)





## FLIPPER 800 DC

PRE-RIG ONLY  
 MERCURY 300 HP V8  
 MERCURY 400 HP V10

X-SPORT PACKAGE  
 ULTIMATE SPORT PACKAGE

LENGTH .....	8,08 M
BEAM .....	2,54 M
DRAUGHT .....	0,75 M
WEIGHT .....	1 700 KG + ENGINE
ENGINE OPTIONS .....	300-400 HP
BERTHS .....	2+2
FUEL CAPACITY .....	256 L
FRESH WATER CAPACITY .....	48 L *)
CE CATEGORY / PERSONS .....	C / 8

# SPACE FOR NEW FRONTIERS

The Flipper 800 DC strikes the perfect balance between dynamic, sporty aesthetics and spacious, comfortable practicality.

A wide seating area means even larger groups can enjoy the thrills of nimble, exciting boating, and a comfortable cabin transforms this premium cruiser into the perfect overnighter.



### TEST REPORT

**BOAT:** FLIPPER 800 DC **ENGINE:** V8 V300 XL AMS DTS **INSTALL. HEIGHT:** 4.  
**DRIVE AND PROPELLER:** 14.75X21" TEMPEST PLUS **RATIO:** 1.75:1 **LOAD (PERSONS):** 2

RPM	TRIM°	SPEED (KN)	FUEL (L / H)	FUEL (L / NIM)	NOISE (DB)
2500	0	9,6	17,9	1,87	64
3000	0	12,2	23,6	1,93	70
3500	1	17,8	27,6	1,55	72,5
4000	2	25,1	36,8	1,47	73
4500	3	32,3	48,3	1,50	75,5
5000	4	37,9	61,4	1,62	77
5500	4	42,1	85,3	2,02	82,5
6000	5	46,6	98,3	2,11	85

The figures in test reports are approximate. It is possible that the propellers used in the tests are not standard propellers.





## STANDARD EQUIPMENT

12V DC output, 3 pcs  
 Berths, 2 + 2  
 Bilge pump, manual and electric  
 Canopy  
 Courtesy lights  
 Cruise Control  
 Cup holders  
 Cushions, cockpit + bow cabin  
 Cushions, sunbed  
 EcoTeak flooring  
 Fender basket  
 Fire extinguisher  
 Fixed fuel tank, 256 L

Hydraulic steering  
 Mercury Active Trim  
 Offshore seat  
 Rails and fittings stainless, acid proof steel  
 SmartCraft instruments (not with Glass Bridge)  
 Table, cockpit  
 USB charging port, 2 pcs  
 Ventilation in bow cabin  
 Wash basin  
 White hull  
 Windshield wiper, starboard  
 Wireless charging of mobile phones, 1 pc

## X-SPORT PACKAGE

Canopy for harbor use  
 Double battery system  
 Drawer refrigerator, Waeco CD-30

Simrad Glass Bridge, NSX 12" + sonar sensor + SCC  
 Trim tabs  
 Water ski pole

## ULTIMATE SPORT PACKAGE

Canopy for harbor use  
 Double battery system  
 Drawer refrigerator, Waeco CD-30  
 Fresh water system, 48 L  
 Gas cooker, with fastening

Radio / Bluetooth, Black Box, 4 loudspeakers  
 Simrad Glass Bridge, NSX 12" + sonar sensor + SCC  
 Trim tabs  
 Water ski pole  
 Windshield wiper, port side

## CHOOSE YOUR FINISHING TOUCHES

1<sup>st</sup> Mate Marine Safety  
 Anchor winch, bow + anchor  
 Antifouling  
 Bimini canopy with removable sides, front and back (replacing standard canopy)  
 Bow thruster  
 Canopy for harbor use  
 Comfort Floor (EVA)  
 Double battery system  
 Drawer refrigerator, Waeco CD-30  
 Fresh water system, 48 L  
 Flushing toilet + septic tank

Gas cooker, with fastening  
 Heater, 2 kW, diesel (factory installation)  
 Hull accent, grey  
 Teak, massive  
 Radio / Bluetooth, Black Box, 4 loudspeakers  
 Shower on swim platform (requires fresh water system 48 L)  
 Simrad Glass Bridge, NSX 12" + sonar sensor + SCC  
 Trim tabs  
 Water ski pole  
 Windshield wiper, port side



## FLIPPER 700 DC

PRE-RIG ONLY

MERCURY 225 HP V6

MERCURY 300 HP V8

X-SPORT PACKAGE

ULTIMATE SPORT PACKAGE

LENGTH.....	7,17 M
BEAM.....	2,48 M
DRAUGHT.....	0,75 M
WEIGHT.....	1 300 KG + ENGINE
ENGINE OPTIONS.....	225-300 HP
BERTHS.....	2+2
FUEL CAPACITY.....	188 L
FRESH WATER CAPACITY.....	48 L *)
CE CATEGORY / PERSONS.....	C / 7

# RECHARGE YOUR SENSES

When you feel it's time to boost your energy, change the pace, reignite your senses, and to unshackle the chains, the 700 DC delivers! Indulge yourself in the pure sensation of power and speed. Savor the feeling of instant response and remarkable drivability. Recharge your batteries relaxing on the premium deck or in the spacious cabin.

Get back to being you, with the 700 DC!

### TEST REPORT

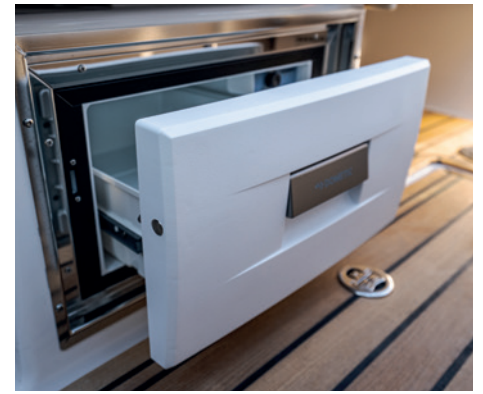
**BOAT:** FLIPPER 700 DC **ENGINE:** V8 V300 XL AMS DTS **INSTALL. HEIGHT:** 5.  
**DRIVE AND PROPELLER:** 14.75X21" TEMPEST PLUS **RATIO:** 1,85:1 **LOAD (PERSONS):** 2

RPM	TRIM°	SPEED (KN)	FUEL (L / H)	FUEL (L / NIM)	NOISE (DB)
2500	0	9,0	17,2	1,91	68
3000	0	12,6	22,5	1,79	71
3500	0	20,7	26,2	1,27	75,5
4000	1	29,3	37,1	1,27	75,5
4500	1,5	36,0	47,3	1,31	78,5
5000	2,5	41,2	59,3	1,44	79
5500	2,5	46,1	82,0	1,78	80,5
5980	3	50,5	97,3	1,93	83

The figures in test reports are approximate. It is possible that the propellers used in the tests are not standard propellers.







## STANDARD EQUIPMENT

12V DC output, 3 pcs  
 Berths, 2 + 2  
 Bilge pump, manual and electric  
 Canopy  
 Courtesy lights  
 Cruise Control  
 Cup holders  
 Cushions, cockpit + bow cabin  
 Cushions, sunbed  
 Fender basket  
 Fire extinguisher  
 Fixed fuel tank, 188 L  
 Hydraulic steering

Mercury Active Trim  
 Offshore seat, 2 pcs  
 Rails and fittings stainless, acid proof steel  
 SmartCraft instruments (not with Glass Bridge)  
 Table, cockpit  
 Teak flooring  
 USB charging port, 2 pcs  
 Ventilation in bow cabin  
 Wash basin  
 White hull  
 Windshield wiper, starboard  
 Wireless charging of mobile phones, 1 pc

## X-SPORT PACKAGE

Canopy for harbor use  
 Double battery system  
 Drawer refrigerator, Waeco CD-30

Simrad Glass Bridge, NSX 12" + sonar sensor + SCC  
 Trim tabs  
 Water ski pole

## ULTIMATE SPORT PACKAGE

Canopy for harbor use  
 Double battery system  
 Drawer refrigerator, Waeco CD-30  
 Fresh water system, 48 L  
 Gas cooker, with fastening

Radio / Bluetooth, Black Box, 2 loudspeakers  
 Simrad Glass Bridge, NSX 12" + sonar sensor + SCC  
 Trim tabs  
 Water ski pole  
 Windshield wiper, port side

## CHOOSE YOUR FINISHING TOUCHES

1<sup>st</sup> Mate Marine Safety  
 Anchor winch, bow + anchor  
 Antifouling  
 Bimini canopy with removable sides, front and back (replacing standard canopy)  
 Bow thruster  
 Canopy for harbor use  
 Comfort floor (EVA)  
 Double battery system  
 Drawer refrigerator, Waeco CD-30  
 Fresh water system, 48 L

Flushing toilet + septic tank  
 Gas cooker, with fastening  
 Heater, 2 kW, diesel (factory installation)  
 Hull accent, grey  
 Radio / Bluetooth, Black Box, 2 loudspeakers  
 Shower on swim platform (requires fresh water system 48 L)  
 Simrad Glass Bridge, NSX 12" + sonar sensor + SCC  
 Trim tabs  
 Water ski pole  
 Windshield wiper, port side



## FLIPPER 650 DC

PRE-RIG ONLY

MERCURY 150 HP EFI

MERCURY 200 HP V6

X-SPORT PACKAGE

ULTIMATE SPORT PACKAGE

LENGTH .....	6,74 M
BEAM .....	2,46 M
DRAUGHT.....	0,70 M
WEIGHT.....	1 050 KG + ENGINE
ENGINE OPTIONS.....	150-200 HP / 85-147 KW
BERTHS.....	2+2
FUEL CAPACITY.....	145 L
FRESH WATER CAPACITY.....	48 L *)
CE CATEGORY / PERSONS.....	C / 7

# PUNCHING WAY ABOVE

The boat that is in a class of its own. Don't let the compact size of the 650 DC fool you – for absolute thrills, explosive performance, supreme agility, exceptional design and pure driving pleasure, the Flipper 650 DC is the champ! The fore cabin makes an extremely comfortable sleeping area, and the cockpit is perfect for drinks, dining, and relaxing – but the only thing you'll be thinking about is the next time you get to start that engine and set out to conquer the seas.



## TEST REPORT

**BOAT:** FLIPPER 650 DC **ENGINE:** 150 XL EFI **INSTALL. HEIGHT:** 2.  
**DRIVE AND PROPELLER:** 14.5X17" ENERTIA **RATIO:** 1.92:1 **LOAD (PERSONS):** 2

RPM	TRIM <sup>o</sup>	SPEED (KN)	FUEL (L / H)	FUEL (L / NIM)	NOISE (DB)
2500	-	9,7	12,4	1,28	73,5
3000	-	15,7	15,0	0,96	73
3500	-	22,6	18,9	0,84	75,5
4000	-	27,4	25,4	0,93	78,5
4500	-	30,9	31,5	1,02	79,5
5000	-	34,1	38,4	1,13	83,5
5750	-	39,3	55,3	1,41	85

The figures in test reports are approximate. It is possible that the propellers used in the tests are not standard propellers.





## STANDARD EQUIPMENT

12V DC output, 3 pcs  
 Berths, 2 + 2  
 Bilge pump, manual and electric  
 Canopy  
 Courtesy lights  
 Cruise Control (only with V6 engine)  
 Cup holders, 4 pcs  
 Cushions, cockpit + bow cabin  
 Cushions, sunbed  
 Fender basket  
 Fire extinguisher  
 Fixed fuel tank, 145 L

Hydraulic steering  
 Offshore seat  
 Rails and fittings stainless, acid proof steel  
 SmartCraft instruments (not with Glass Bridge)  
 Table, cockpit  
 Teak flooring  
 USB charging port, 2 pcs  
 Ventilation in bow cabin  
 Wash basin  
 White hull  
 Windshield wiper, starboard  
 Wireless charging of mobile phones, 1 pc

## X-SPORT PACKAGE

Canopy for harbor use  
 Double battery system  
 Drawer refrigerator, Waeco CD-30

Simrad Glass Bridge, NSX 12" + sonar sensor + SCC  
 Trim tabs  
 Water ski pole

## ULTIMATE SPORT PACKAGE

Canopy for harbor use  
 Double battery system  
 Drawer refrigerator, Waeco CD-30  
 Fresh water system, 48 L  
 Gas cooker, with fastening

Radio / Bluetooth, Black Box, 2 loudspeakers  
 Simrad Glass Bridge, NSX 12" + sonar sensor + SCC  
 Trim tabs  
 Water ski pole  
 Windshield wiper, port side

## CHOOSE YOUR FINISHING TOUCHES

1<sup>st</sup> Mate Marine Safety  
 Anchor winch, bow + anchor  
 Antifouling  
 Bimini canopy with removable sides, front and back (replacing standard canopy)  
 Canopy for harbor use  
 Comfort floor (EVA)  
 Double battery system  
 Drawer refrigerator, Waeco CD-30  
 Flushing toilet + septic tank  
 Fresh water system, 48 L  
 Gas cooker, with fastening

Heater, 2 kW, diesel (factory installation)  
 Hull accent, grey  
 Mercury Active Trim (only with EFI)  
 Radio / Bluetooth, Black Box, 2 loudspeakers  
 Shower on swim platform (requires fresh water system 48 L)  
 Simrad Glass Bridge, NSX 9" + sonar sensor + SCC  
 Simrad Glass Bridge, NSX 12" + sonar sensor + SCC  
 Sun-Top  
 Trim Tabs  
 Water ski pole  
 Windshield wiper, port side



## FLIPPER 900 ST

MERCURY 2 X F225 XL CW DTS  
MERCURY 2 X V250 XL CW AMS DTS

LENGTH .....	9,02 M
BEAM .....	3,15 M
DRAUGHT .....	0,70 M
WEIGHT .....	3 000 KG + ENGINE
ENGINE OPTIONS .....	2 X 225-250 HP
BERTHS .....	4+2
FUEL CAPACITY .....	380 L
FRESH WATER CAPACITY .....	100 L
CE CATEGORY / PERSONS .....	C / 10

# THE ULTIMATE GETAWAY

Discover the freedom and adventure of the open water in the versatile and stylish 900 ST. Filled with exciting and clever features, the 900 ST allows you to focus on having fun and adventure with those you care about the most. With fore and aft cabins, a stylish control panel, retractable roof, premium furnishings and much more, this powerful and agile cruiser was made to be the ultimate getaway.



### TEST REPORT

**BOAT:** FLIPPER 900 ST **ENGINE:** 2 X 250 XL VER V8 **INSTALL. HEIGHT:** 3.  
**DRIVE AND PROPELLER:** 16 X 19 ENERTIA ECO LR + LH **RATIO:** 1.85 : 1 **LOAD (PERSONS):** 3

RPM	TRIM°	SPEED (KN)	FUEL (L / H)	FUEL (L / NIM)	NOISE (DB)
2500	0	9,6	33	3,46	72
3000	0	14,2	45	3,17	73
3500	0	23,5	53	2,26	77
4000	2	29,1	72	2,48	77
4500	3	33	86	2,61	79
5000	4	37,2	105	2,82	80
5500	5	41,4	139	3,36	83
6000	6	44,6	170	3,82	87

The figures in test reports are approximate. It is possible that the propellers used in the tests are not standard propellers.

## STANDARD EQUIPMENT

12V DC output, 4 pcs  
 Berths, 4 + 2  
 Bilge pump, manual and electric  
 Bow thruster  
 Canopy  
 Chart map for plotter  
 Courtesy lights  
 Cruise Control  
 Cup holders  
 Curtains, bow cabin  
 Cushions, cockpit + sunbed  
 Deck glasses  
 Deck hatch + blackout curtains, 2 pcs  
 Double battery  
 EcoTeak flooring, bow deck + cockpit  
 Fender basket  
 Fire extinguisher, 2 pcs  
 Fixed fuel tank, 380 L  
 Flushing toilet, electric + septic tank, 47 L

Fresh water system, 100 L  
 Hydraulic steering  
 Offshore seat  
 Openable porthole in WC  
 Pantry, stove (Wallas 85Dt), faucet + sink  
 Rails and fittings stainless, acid proof steel  
 Refrigerator, 49 L  
 Shower drain in toilet room + shower  
 Simrad Glass Bridge, NSX 12" + sonar sensor + SCC  
 Sport-Top-roof, electric  
 Table, cockpit (incl. electric height adjustable leg + cushion)  
 Tilt steering wheel  
 Trim tabs  
 USB charging port, 2 pcs  
 Ventilation in the bow cabin  
 Wash basin + faucet, WC  
 White hull  
 Windshield wipers, 2 pcs  
 Wireless charging of mobile phones, 1 pc

## OPTIONAL EQUIPMENT

1<sup>st</sup> Mate Marine Safety  
 Air conditioning (requires shore power with inverter)  
 Anchor winch, aft + anchor 12 kg  
 Anchor winch, bow + anchor, 10 kg  
 Antifouling  
 Autopilot  
 Bed mattresses in cabins  
 DAB-Radio  
 Extra battery  
 Extra drawer fridge, 30 L (No 1)  
 Extra drawer fridge, 30 L (No 2)  
 Full Glass Bridge, 2 x Simrad Glass Bridge, NSX 12" + sonar sensor + SCC  
 GPS tracking system  
 Grey water tank  
 Heater 4,5 kW, diesel: cabin, cockpit, windshield (factory installation)  
 HIFI audio, Fusion, 4 speakers + subwoofer + amplifier

Hull accent, grey  
 Joystick Piloting  
 Mercury Active Trim  
 Radio / Bluetooth, Black Box, 4 loudspeakers  
 Rear camera  
 Shore Power Basic, 25 Ah + sockets  
 Shore Power Maxi + inverter  
 Shower on swim platform  
 Simrad HALO20+ radar  
 Solar panels, 2 x 55 W Semi Flex  
 Sunbed cushions, bow  
 Underwater lights  
 Ventilation blower for cabin  
 VHF / AIS, receiver / sender  
 Warm water system, 16 L (requires shore power)  
 Zipwake automatic trim tabs (instead of standard trim tabs)





**READ MORE:**  
[WWW.FLIPPERBOATS.FI](http://WWW.FLIPPERBOATS.FI)

## **FLIPPER SPEEDHULL**

# **INNOVATIVE STRUCTURE**

Flipper's unique speed hull design is known for its stiffness, silence and fine handling. All aspects that our customers appreciate when gliding thru the waves with speeds that most others just dream of.

Flippers unique changing V-shaped speed hull with optimized hydrodynamic design lifts the boat easily to plane when accelerating. This engineering marvel helps you to enjoy boating to the fullest, with full control and as efficient as possible. You will need to try it to fully experience it.





900 ST



900 DC



800 DC



800 DC



700 DC



700 DC



650 DC



650 DC

# FLIPPER

Driven by **the exceptional**



VALID FROM 2024

BELLA-VEEET OY  
VÄLIKÖNTIE 10, 70700 KUOPIO  
TEL. +358 17 288 3800  
[WWW.FLIPPERBOATS.FI](http://WWW.FLIPPERBOATS.FI)  
Part of Nimbus Group



The specifications, photographs, illustrations and descriptions in this brochure should not be regarded as a definite guide to current specifications. We reserve the right to make changes without prior notice.

© Bella-Veneet Oy 2024